



Pusan National University School of Business

30 Jangjeon-dong, Geumjeong-gu, Busan 609-735, Republic of Korea

Tel. +82-51-510-7663 Fax. +82-51-581-3142

<http://biz.pusan.ac.kr/english>



PNU
SCHOOL OF
BUSINESS



PNU School of Business

PUSAN NANTIONAL UNIVERSITY

contents

- 04 Global PNU
- 05 History of School of Business
- 06 School of Business
- 08 Scholarship Programs
- 10 BK21 Project
- 11 BB21 Futures Finance Project(Brain Busan 21)
- 12 Exchange Student Program
- 14 Dormitories
- 16 Facilities
- 18 Student Council Activities
- 19 Student Clubs
- 20 Admissions
- 22 Faculty



Global Business Leader ———

PNU School of Business



PUSAN NATIONAL
UNIVERSITY



Pusan National University, with world-class research capacity and cutting-edge education environment, is training outstanding individuals demanded by the 21st century's knowledge-based society.



HISTORY

1980 ~ 1990

- 1998.03.** Renamed Department of Trade in College of Commerce to School of Trade and International Studies
- 1996.03** Integrated Department of Management and Department of Accounting in College of Commerce into School of Management
- 1995.01** Entered a student exchange agreement with School of Management at University of Manitoba, Canada
- 1994.05** Entered an academic and student exchange agreement with School of Commerce at Kyushu University, Japan
- 1992.03** Entered an academic and student exchange agreement with School of Economics at Hēilóngjiāng University, China
- 1990.01** Entered an academic and student exchange agreement with School of Commerce at Towson University, U.S.

1940 ~ 1950

- 1953.09** Newly founded College of Liberal Arts and Sciences (Department of Economics) and College of Commerce (Department of Commerce, Department of Trade) due to approval for installation of Pusan National University
- 1953.04** Promoted Department of Commerce to College of Commerce
- 1948.09** Newly founded Department of Commerce
- 1946.05** Founded Pusan National University

2000 ~ Present

- 2010.09** Renamed college of Commerce to School of Business
- 2008.** Operated division of Business accounting, and financial engineering in Department of Business Administration
- 2007.** Newly founded division of Financial Engineering in Department of Business Administration
- 2006.03** SK Lounge opened
- 2003.02.** Entered an academic exchange agreement with research department and graduate/undergraduate school of management at Osaka City University, Japan.

1960 ~ 1970

- 1979.02** Entered an academic exchange agreement with University of Alabama, U.S.
- 1977.03** Newly founded Department of Accounting in College of Commerce
- 1969.03** Abolished Department of Commerce in College of Commerce
- 1965.10** Twinned with University of Alabama, U.S.
- 1964.03** Reopened Department of Economics in College of Commerce
- 1963.03** Newly founded Department of Management in College of Commerce
- 1961.09** Abolished Department of Economics in College of Liberal Arts and Sciences due to College Organization Ordinance



SCHOOL OF BUSINESS

- <http://biz.pusan.ac.kr/english>
- TEL. +82-51-510-7663 FAX. +82-51-581-3142



Producing Global Management Experts

The School of Business, rooted in the University's education ideology of, Truth, Liberty, and Service, has the goal of training students to become global business leaders, to develop expertise in various areas in business, and using latest business paradigm to lead organizations to fast adapt to changing environment and achieve competitive edge.

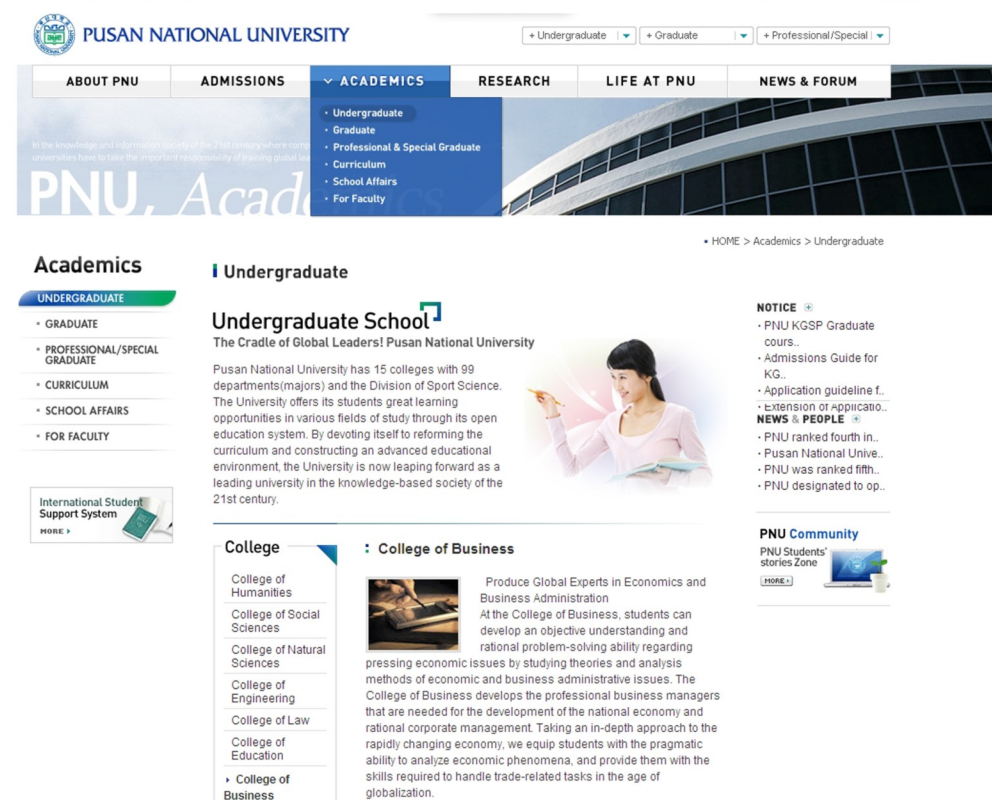
School of Business Pusan National University

The School of Business is a leading business education institution representing 8 million people of Busan and Gyeongnam province. Our aim is to expand current offering of courses taught in English to the entire curriculum. The School, in addition, boasts 37 full-time faculty providing finest quality education to students and delivering outstanding research in their respective areas

▶ Number of Enrolled Students and Alumni of School of Business (as of March, 2011)

Programs		Current	Alumni
Undergraduate		1,443	6,601
General Graduate School	Master	127	780
	Doctorate	31	176
Business Graduate School	Master	475	2,831
Executive Program		45	3,178

<http://biz.pusan.ac.kr/english>



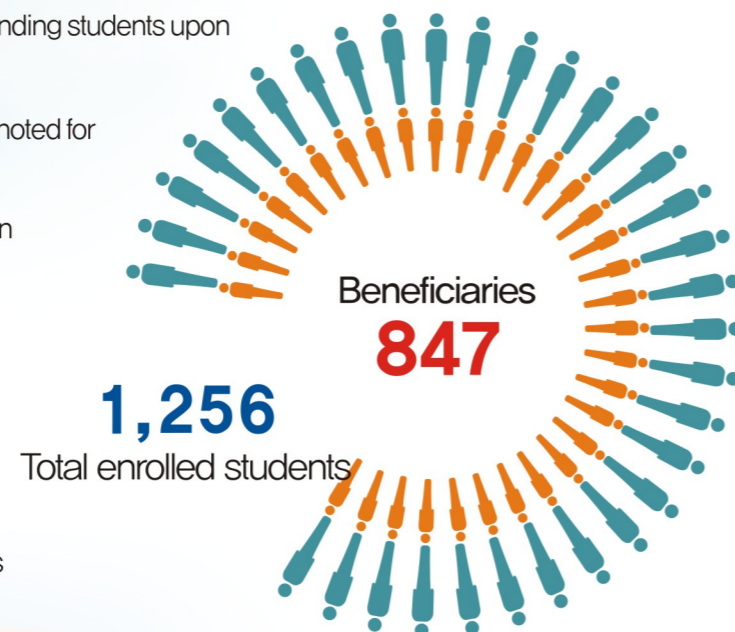
Scholarship Programs



University Scholarships

The School of Business offers scholarships to students of outstanding academic standing and financial aid to those with various needs. Significant number of students have benefited from various scholarships available.

- ▶ Special scholarship for academically outstanding students upon entry to the University
- ▶ Scholarship for those and children of those noted for honorable national service
- ▶ Scholarship for passing national examination
- ▶ Scholarship for those without parents
- ▶ Scholarship for those in special education
- ▶ Scholarship for academic excellence
- ▶ Financial aid to those in economic hardship
- ▶ Financial aid through work–study programs



“80% of students enrolled at School of Business are

*Based on resources from 2010

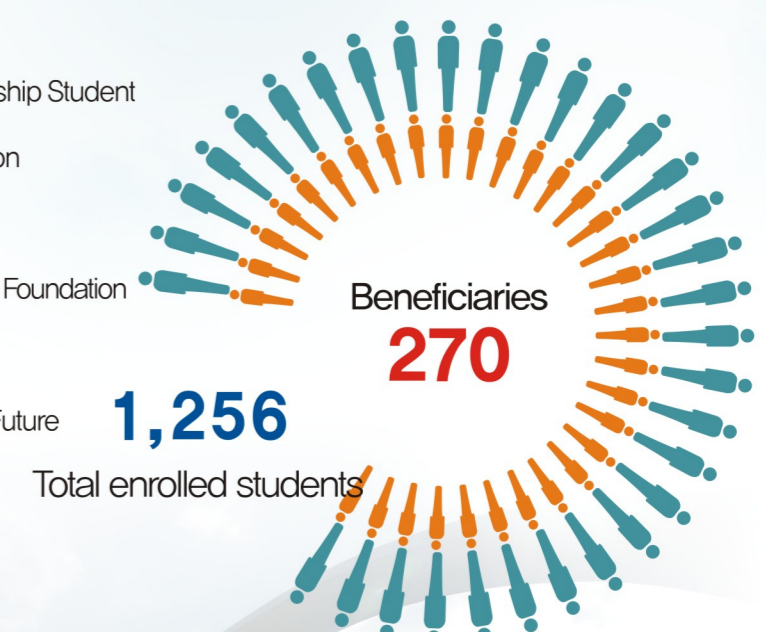
Scholarship Programs



External Scholarships

Entering and currently enrolled students at School of Business have opportunities to receive scholarships from 32 endowments outside the university which are supported by corporations, non–profit organizations, individuals, and alumni associations.

- ▶ Kumho–Asiana Culture Foundation
- ▶ Mirae Asset Foreign Exchange Scholarship Student
- ▶ Samsung Dream Scholarship Foundation
- ▶ City of Busan Scholarship
- ▶ Nonghyup Culture & Welfare Scholarship Foundation
- ▶ Dongbu Culture Foundation
- ▶ Korea Scholarship Foundation For the Future Leaders
- ▶ AMP Alumni Association



benefiting from scholarships totaling **₩887,949,760 KRW.**”

BK21 Project



BK21 Project

<http://bk21.pusan.ac.kr>

Research and Education Institute for Development of
Banking, Securities, and Derivatives

- The largest research group in the university's liberal arts and humanities area aims to support graduate students in becoming outstanding financial experts.
- To assist finance professionals in strengthening their competitiveness in the area of international finance, and applying new learning in their specialized research.
- Projects Undertaken**
 - Managing scholarship/aid programs (e.g. stipends to graduate research students)
 - Coordinating special lectures by highly-recognized international scholars
 - Conducting various workshops and seminars
 - Supporting global education for the School



BrainBusan21 (BB21) Finance Project

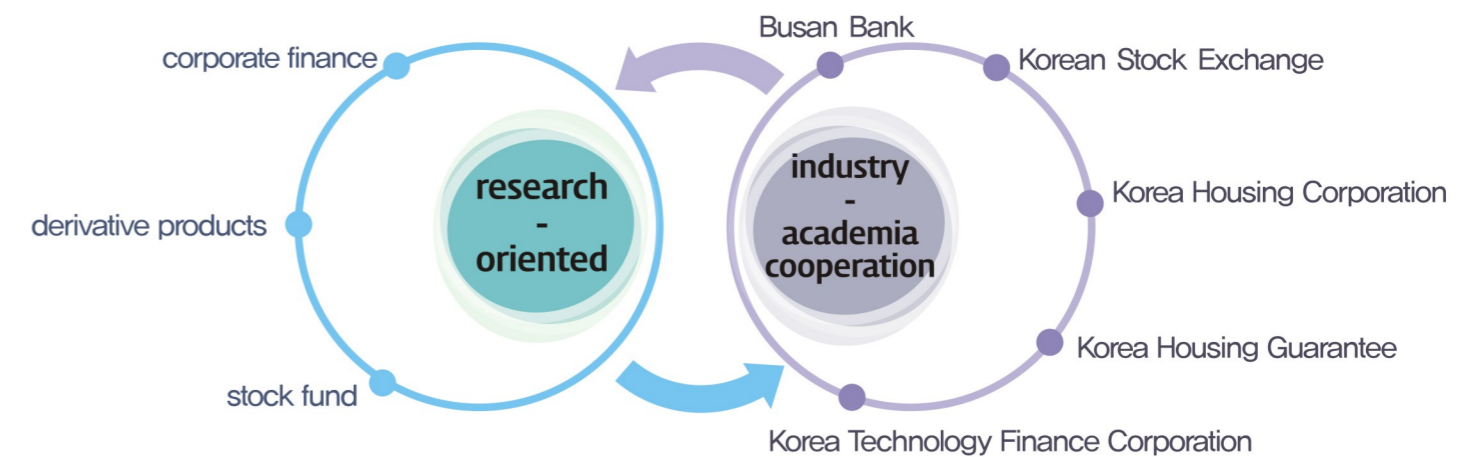


BrainBusan21 (BB21) Finance Project

[http:// pl.pusan.ac.kr/bb21sbpnu](http://pl.pusan.ac.kr/bb21sbpnu)

Scientific Research Project for the Advancement of
Finance in Busan

- To train finance professionals to lead in advancement of industry
- In cooperation with the industry, the project establishes academia-industry research network to study central issues related to domestic and global finance



Corporate Finance Research Team



Derivative Product Research Team



Stock Fund Research Team



Overseas Exchange Student Programs

Regular Programs

- Exchange Student Program**
 - A program that exchanges students based on student exchange agreements with foreign schools
- School-Sponsored Student Program**
 - This program sends students to universities Overseas in accordance with previously established agreements.
- Self-Funded Student Program**
 - This program allows students who have received permission to enroll in a foreign university to gain understanding and experience in studying overseas.

Country	Universities
SAF Program	SAF(Study Abroad Foundation) : Membership University U.S., Canada, Australia, Island, etc Columbia University, Indiana University, Purdue University more than 50 World class Universities
Norway	Norwegian University of Science & Technology
U.S.	Illinois Institute of Technology Mississippi State University University of Alabama University of Hawaii, Hilo University of Mississippi
Canada	University of Manitoba University of the Fraser Valley
Finland	Hanken School of Economics
Kazakhstan	Kazakhstan Inst. of Management, Economics & Strategic Research(KIMEP)
Australia	Deakin University University of Adelaide University of New South Wales University of Tasmania
Singapore	Nanyang Technological University Singapore Management University Chinese University of Hong Kong
Hong Kong	Lingnan University The University of Hong Kong
Japan	Fukuoka University Hirosaki University Hiroshima University Hitotsubashi University Kagoshima University Kanazawa University Kobe University Kyushu University Oita University Osaka University Ritsumeikan Asia-Pacific University Ritsumeikan University Saga University Shizuoka University Tohoku University Tsukuba University Waseda University Yamagata University
Taiwan	National Taiwan University National Chengchi University
China	Chongqing University Henan Polytechnic University Jilin University Renmin University of China Shandong University Sun Yat-Sen University
France	University of Nice-Sophia Antipolis
Germany	Gottfried Wilhelm Leibniz University Hannover Otto-Friedrich-University Bamberg
	Moscow State University

Overseas Exchange Student Programs

Summer Programs

Programs	Country
UC Berkeley Summer School	U.S.
University of Miami Summer School	U.S.
University of Alabama Language Training	U.S.
English-focused Training	Philippines, etc.
China Language Training	China
KIMEP Summer School	Kazakhstan

- Number of students of School of Business attending universities in foreign countries:
36 in U.S., Canada, Finland, Vietnam, and others.
- Invited exchange students attending the School:
18 from Singapore, China, and other countries.

Of the 830 international students attending PNU,
153 of them are enrolled in School of Business

Dormitories

PNU's residence halls provide a unique opportunity to live in an environment that is conducive to studying while encouraging crosscultural understanding, cooperation, and friendship. PNU's 8 residence halls house 4,421 students and help students' campus life to be more enjoyable. Many of the residents are international students who have come from 27 different countries creating an atmosphere of international community within and around the residence halls. In addition, all residence halls command a wonderful area view so that students can get wide view of the campus and beyond from their rooms.

Types of Dormitories

- Men's Dormitory: Jilli Hall
- Women's Dormitory: Jayu Hall
- New Dormitory: Wungbi Hall

Application Procedure

- Prospective students should submit the application form with the required documents to the Office of International Services during the registration period for international students
- The list of new dormitory residents is posted on the ISSS board during the appointed period.
- Residents may move into the dormitories after payment of accommodation fees.

Period of Application

- Spring Semester: Early January
- Fall Semester: Early July
- Students may move into the dormitories during summer or winter break without going through application procedures after payment of accommodation fees.
For extension of stay during winter break: from late January to early February
(Direct application and payment at Dormitory Administrative Office)

- For more information on International Student Support System, visit <http://onestop.pusan.ac.kr/english>

Dormitories

School of Business Pusan National University



Internet café



Computer room



Self-study room



Financial information room



High-tech lecture room



Job Search Assistance Center

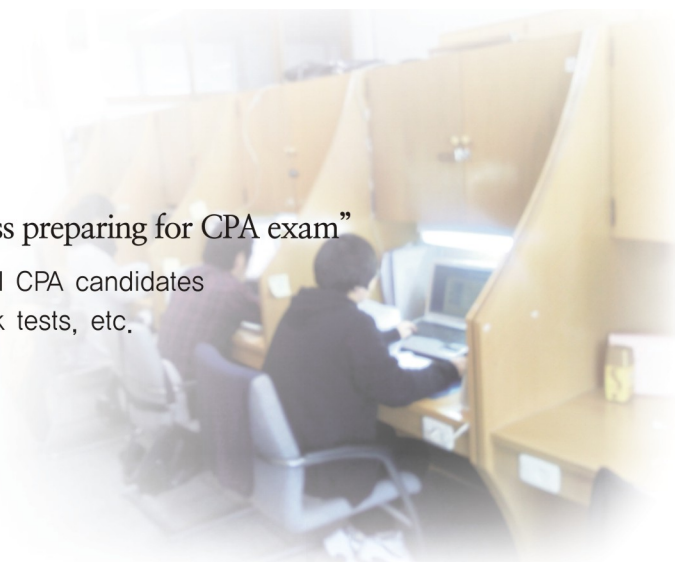


- Career planning counseling for enrolled students and alumni
- Assists preparation for job search and integral career development through employment card system
- Lends books on job search, license examinations, and information on companies
- Supports language program in connection with YBM Language School and ELS Pusan University Center (TOEIC lectures, English interviews, etc.)
- Conducts special job search lectures to increase competitiveness in job search for students

CPA Examination Workshop

“Study group for students in School of Business preparing for CPA exam”

- Special lectures and meetings with successful CPA candidates
- Continuous progress management using mock tests, etc.



Civil Service Examination Workshop

“Study group for students planning to become public administrators”

- Exam preparation using mock tests from renowned academic institutions
- Attendance and progress check by adviser



Student Council Activities

The purpose of Student Council is to create an academic environment that students desire and need.



2010 New Year's Eve with International Students



2010 Sports Tournament in School of Business



Club Activities

The student clubs in the School of Business at PNU aim to provide dynamic and creative campus life for students desiring more diverse and richer college experience.

F & M (Finance & Monetary)

A club for researching fiscal policies and overall economics



Caplus (<http://www.caplus.or.kr>)

Consulting and management case study club



S.M.P (<http://club.cyworld.com/StockPNU>)

Value investment research club



MAD (<http://cafe.daum.net/MAD>)

School of Business Soccer Club



Organizations for Foreign Students

- Chinese Students' Association <http://ipusan.com/>
- PNU Club for Foreign Students (PNUF)
A non-profit organization consisting of faculty members and students of PNU offers free Korean language and cultural classes.

Undergraduate

Required Documents



- Certificate of Attendance of Middle School and/or High School
- Certificate of (Expected) High School Graduation
- Residence Register(Certificate of Family Relationship if Requested)
- Record of entries into and departures from Korea
- Copy of Permanent Residency
- Certificate of Overseas Employment of the Guardian
- Copy of Report of Direct overseas Investment/Copy of Authorization and/or Permissiion of Establishment of Overseas Branch
- Copy of Certificate of Business Registration
- Copy of Certificate of Corporation Registration
- Proof of Tax Payment
- Certificate of Study/Training Abroad Programs
- Copy of Government Invitation or Recommendation

- If a document was issued in a foreign country, the original should be submitted
- Documents in languages other than English should be submitted with a notarized Korean translation
- Additional points will be given for exceptional English skills. Submit results of official English tests (TOEIC, TOEFL, or TEPS)
- Applicants maybe requested to submit additional documents for the admissions process

※ Documents to be submitted may differ depending on admission classification
Please refer to the Entrance Requirements attached for further information

Graduate

Required Documents



Required documents should be the originals.

When the original documents are not in Korean or English, they should be accompanied by a notary certificate along with their Korean or English translations.

■ Prospective students whose parents are all foreign nationals are noted as A. Those who have completed the primary, secondary, and university education overseas are noted as B in the table below.

Required Documents	master's		Doctoral		Remarks
	A	B	A	B	
• Completed application form I	✓	✓	✓	✓	Print out the completed application and attach a recent photograph (4cm×5cm) to the application before submitting it
• Completed application form II	✓	✓	✓	✓	
• Diploma(s) or Certificate(s) showing bachelor's degree awarded (or a certificate of a degree to be granted)	✓	✓	✓	✓	
• Official transcripts for all semesters of bachelor's courses	✓	✓	✓	✓	Those who transferred to another school must submit the transcripts for the school to which they transferred
• Documents certifying completion of all school years of elementary, middle and high schools : or transcripts of all school years		✓		✓	Certificate of attendance must exactly specify dates, months, and years of attendance
• Study plan & Personal Statement	✓	✓	✓	✓	
• Diploma(s) or Certificate(s) showing master's degree awarded(or a certificate of a degree to be granted)			✓	✓	
• official transcripts for all semesters of master's course			✓	✓	
• Abstract ora copy of master's dissertation			✓	✓	Applicable when available
• Recommendation letter from the dean of the department			✓	✓	Only foreign applicants who reside in korea at the moment of application
• Korean proficiency certificate : certificates of TOEFL, TOEIC, or TEPS	✓	✓	✓	✓	Original or notarized copy only (Applicable when available)
• Research results(publications or products)	✓	✓	✓	✓	Applicable when available

Managed Information System



Kim, Yuil



Chang, Hwalsik



Kim, Jongki



Ok, Seokjae



Hong, Taeho

International Business



Bang, Hoyoel



Kim, Jinwook



Yu, Sunghoon

Marketing



Lee, Jongho



Suh, Munshik



Shin, Jongkuk

Operations Management



Kim, Kiseog



Choi, Jongyeol



Kwak, Choonjong



Profession and Service



Management & Organizations



Kim, Changho



Cho, Youngbohk



Kim, Jongkwan



Kwag, Sunhwa



Choi, Suheyong



Jun, Gyungju

Finance



Kim, Taehyuk



Kim, Moosung



Ohk, Kiyool



Ko, Kwangsoo



Eom, Cheoljun



Lee, Jangwoo



Kang, Sanghoon



Kim, Jinwoo

Accounting



Choi, Sangmoon



Kim, Jeongkyo



Lee, Kyunbong



Choi, Jongseo



Chi, Sungkwon



Lee, Chanho



Kim, Jinsep



Kim, Dongil



Kim, Myoungjong

Passion and Dedication

School of Business
Pusan National University